

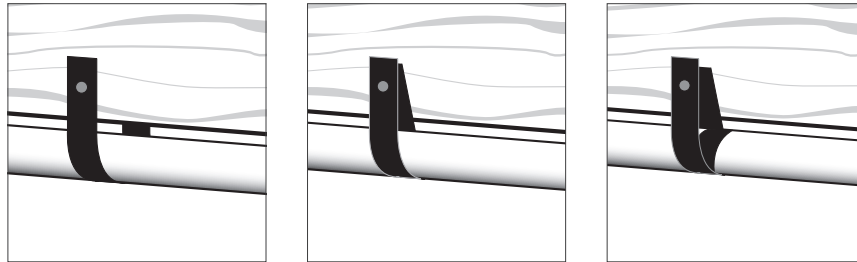
## Ape Tape™

### Woven Polypropylene Hanger Strap

- No sharp edges to cut installer's hand or pipe
- Strong, durable material yet lightweight
- Max load: 125 lbs.
- Will not fracture in extremely cold temperatures
- Cut to desired length
- Install nail or screw at least 1" from end of strap



554-25W



Ape Tape may be installed on one, or both sides of the joint. Double-wrap for a more secure installation.

Item No.	Description	Pkg	Min Qty	Case Qty
554-10WPK2	5/8" x 10 ft, 1/bag	C*	10	10
554-25W	5/8" x 25 ft, 1/bag	C*	1	20
554-100W	5/8" x 100 ft, 1/bag	C*	1	20



SUPPLY

DRAINAGE

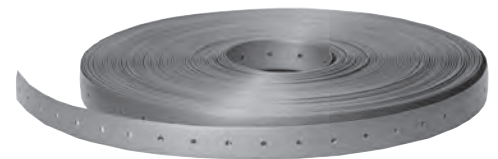
SUPPORT

APPENDIX

## Plastic Hanger Strap

### Polypropylene with 1/8" Holes

- Not recommended in extremely cold climates (below 32°F)
- Max load: 20 lbs.



554-100

Item No.	Description	Pkg	Min Qty	Case Qty
554-10PK2	3/4" x 10 ft coil, 1/bag	C*	10	10
554-25	3/4" x 25 ft coil, 1/bag	B*	1	20
554-100	3/4" x 100 ft coil, 1/bag	B*	1	20